



Product Catalog 2015

Copernicus
educational products

“

All too frequently
answers are faint and weak.
With careful listening
they can be heard.

- George Phillips, founder of Copernicus

”

50 hearts.

In 2001 when my father George, a former teacher and founder of Copernicus, passed away, my three year old son Jacob drew a picture of his grandfather, himself and an abacus. Jacob also drew fifty red hearts surrounding himself and his grandpa. This signified one of their many math lessons together.

It always tugs at my heartstrings when I look at that picture but it also makes me grateful for Copernicus' connection to education. The fact that we hopefully help teachers in their admirable journey to educate our children, makes our employees and myself very grateful.

With gratitude,



Jim - Chief Cook and Bottle Washer



Cover art was hand drawn by Laura Gallant, a Copernicus employee since 2008.



Winner of Canada's
Outstanding Employer
Award 2 years running -
2013/14

Giving Back

Giving back to us means getting involved and learning through doing.

Our current initiatives include: planting trees, securing and conserving wilderness land and contributing to schools.



Proud sponsor of the Nature Conservancy since 2009

Trees for Schools

We have supplied schools in Southwestern Ontario with over 75,000 free trees since 2009. We also have a tree program in southern China to help communities where we operate remain green.

Support for schools in needs

In 2014, we donated the basic necessities and Copernicus products to three schools in China and one in Costa Rica.

Copernicus Eco Fund

In 2014, we began a partnership with MyClassNeeds and established a fund that provides support to schools for outdoor environmental focused projects.

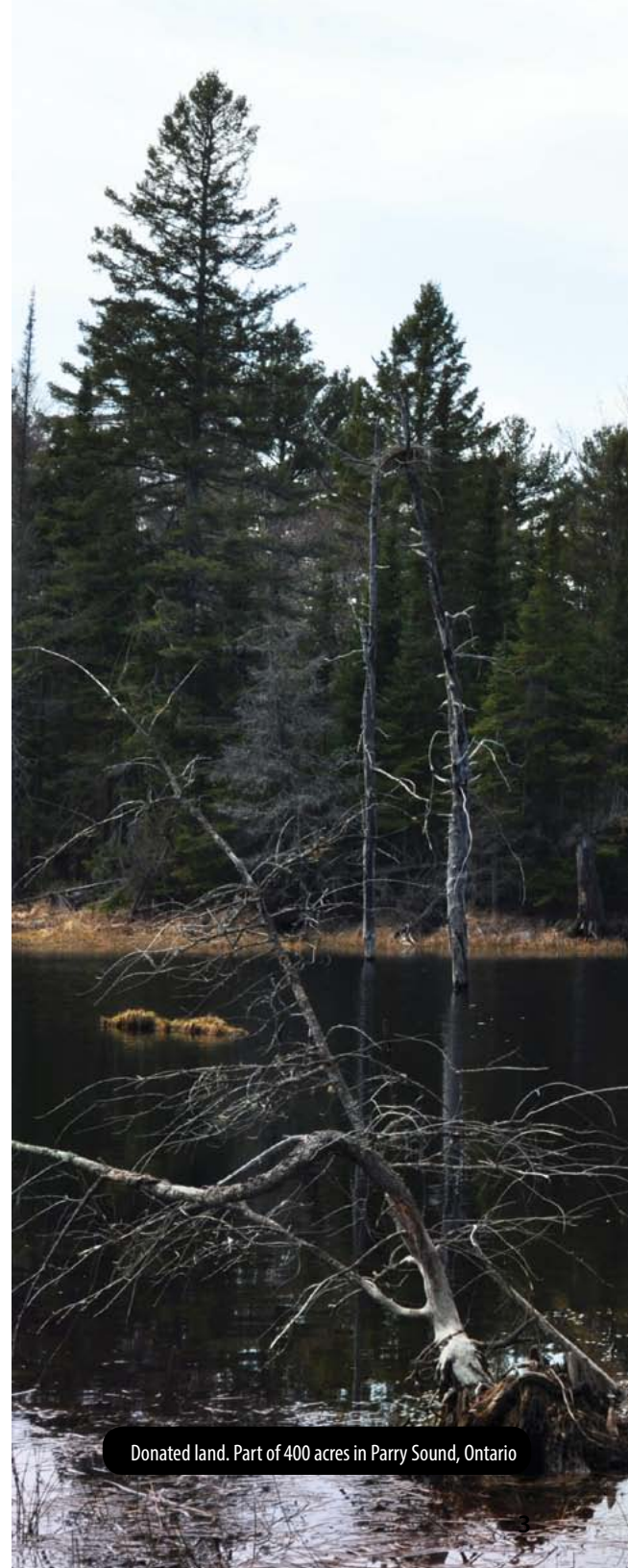
Visit: myclassneeds.ca for more details.

Land preservation

Last year, we donated 400 acres of wilderness land with provincially significant wetlands to Muskoka Conservancy which protects and preserves land for future generations.

Planted over 60,000 trees

Copernicus-owned conservation land now totals 190 acres.



Donated land. Part of 400 acres in Parry Sound, Ontario

“

We make a living by what we get.
We make a life by what we give.

- Winston Churchill

”





We stand behind, on top of and even inside our products.

Durability

Our products are built to last. We drive over them, drop them from 2 stories and even take them for 6km walks on the streets of China to test the casters. *Really, it happens.* Check our Youtube channel to see our Extreme Product Testing videos.

Safety

Before a product is approved, our QA team audits for pinch points and sharp edges. Our Ultra-Safe premium book ledges were specifically designed to be free of any sharp corners.

Heat resistance

Our Tech Tub™ is made from a specialized ABS meant to withstand the heat devices can create while charging. Our laptop trays are designed with vents to allow for air circulation. This makes them perfect for your trips to Death Valley, CA or the equator - *whichever is closest.*



Recycling

Most of our tubs are made with recycled material.

Our “no small print” warranty.

Our warranties are pretty simple. If your product fails in any way within your warranty period, we will correct it. Or, if your warranty period expires and it seems like your item should have lasted longer, we will do everything we can to keep you happy. *Who likes fine print anyway?*

Technology

Starting on page 8



Easels

Starting on page 25



| | |
|---------------------------------|----|
| Tech Tub™ - Improved | 10 |
| Tech Tub™ Carts | 14 |
| Dewey the Document Camera Stand | 16 |
| 7 Device Tech Cart | 18 |
| Media Pods - Improved | 19 |
| 3D Printer Cart - New | 20 |
| STEM Maker Station - New | 22 |

| | |
|--|----|
| Royal® Reading Writing Center | 27 |
| Queen Royal® Reading Writing Center | 27 |
| Classic Royal® Reading Writing Center | 28 |
| Regal™ Reading Writing Center | 29 |
| Expanded Storage Royal® Reading Writing Center | 30 |
| Standard Reading Writing Center | 31 |
| Premium Royal® Inspiration Station | 32 |
| Standard Royal® Inspiration Station | 33 |
| Inspiration Station with Tech Tub™ | 33 |
| Deluxe Chart Stand | 34 |
| Primary Teaching Easel | 35 |
| Early Learning Station | 36 |
| Double Sided Bamboo Easel | 37 |
| Premium Teach 'n' Go Cart | 38 |
| Classroom Cruiser™ | 39 |
| Premium Royal® Chart Caddy Center | 39 |
| Tabletop Easel | 40 |
| Teacher's Value Easel | 41 |
| Basic Chart Stand | 41 |

Links to Product Pages on Copernicused.com

Place your cursor over the product SKU as shown to visit the product page on our website.

| SKU | Product name and |
|-------|---|
| DCS1A | Dewey the Document Camera Stand |
| | <ul style="list-style-type: none"> • Fits iPad® 2, 3, 4, ... • 90° rotating mouse • Lightweight and • Useful as an iPad |
| DCS2A | Dewey the Document Camera Stand |

Storage

Starting on page 42

Early Childhood | Arts & Crafts

Starting on page 52



| | |
|---|----|
| Library on Wheels™ | 43 |
| Leveled Reading Book Browser Cart | 44 |
| Book Browser Cart with Tech Tubs™ | 45 |
| Teacher Trolley | 46 |
| Storage Room Organizer for Leveled Literacy Program | 47 |
| Tubs | 48 |
| Phys Ed Cart™ | 49 |
| Chart Caddy™ 10 Pack | 50 |
| Multi-Purpose Cart | 50 |
| Teacher's Value Book Browser Cart | 51 |
| Reading Resource Station | 51 |

| | |
|---------------------------------|----|
| Double Sided Art Easel | 55 |
| Spring Loaded Paint Drying Rack | 56 |
| Drying Racks | 57 |
| Sand and Water Sensory Centers | 58 |

Visit www.copernicused.com to view product specifications, compatibility charts, dimensions and assembly instructions. You will also find informative product feature videos.

Technology

technology

| | |
|--|-----------|
| Tech Tub™ - Improved | 10 |
| Tech Tub™ Carts | 14 |
| Dewey the Document Camera Stand | 16 |
| 7 Device Tech Cart | 18 |
| Media Pods - Improved | 19 |
| 3D Printer Cart - New | 20 |
| STEM Maker Station - New | 22 |





A new seed falls into the soft soil.
What will happen next?

12



Tech Tub™

“

As a school principal, I deployed 1:1 devices at the secondary and elementary levels. Copernicus has developed the most versatile solution for securing and charging mobile devices in the market today.

- Susan Wells, ISTE Mobile Learning Network Past President
and School-based Administrator

See the Tech Tub™ Whitepaper on www.copernicused.com/whitepapers

”

- Tech Tubs™ offer a direct alternative to high cost, heavy and oversized tech storage and charging solutions.
- Designed to be secure, highly mobile and modular, the Tech Tub™ supports a “grow your own technology” approach to purchasing
- Each Tub is designed to carry, charge and sync iPads®, Chromebooks™ or other tablets
- Tech Tubs™ now have a lifetime warranty

Patent pending on Tech Tubs™

Choosing your Tech Tub™

technology



IMPROVED



NEW Adjustable dividers



NEW Internal cable pocket

Optional



Belkin 7 port
USB Sync Hub for iPads®

| iPad® & Chromebook™ | iPad® & iPad® Mini | | | Chromebook™ |
|---|--|---|---|---|
|  |  <p>REPLACES TEC500</p> |  <p>IMPROVED</p> |  <p>NEW for Summer 2015</p> |  <p>REPLACES TEC500C Summer 2015</p> |
| <p>Tub only TEC57</p> | <p>Holds 6 tablets TEC600</p> | <p>Holds 7 tablets TEC700</p> | <p>Holds 10 tablets TEC1000</p> | <p>Holds 6 Chromebooks™ TEC600C</p> |
| <p>14"H x 12"W x 16"D</p> | <p>14"H x 12"W x 16"D</p> | <p>14"H x 12"W x 16"D</p> | <p>14"H x 12"W x 16"D</p> | <p>17"H x 12"W x 16"D</p> |
| <p>TEC57 Optional Accessories</p> <p>Locking block and pin TEC-AC100</p> <p>6 outlet power strip 25515</p> <p>7 outlet power strip 255151</p> | <p>6 outlet internal power strip 7 outlet external power strip 10 port USB hub (syncs and charges) 6 outlet internal power strip</p> | | | |
| <p>Optional Accessory for TEC600 and TEC700</p> <p>Belkin 7 port USB sync hub for iPads® - 255141</p> | <div style="display: flex; flex-wrap: wrap; justify-content: space-around;"> <div data-bbox="561 789 789 1016" style="background-color: #76b82a; color: white; padding: 10px; border-radius: 10px; text-align: center;"> <p>All models (except TEC57) include:</p> </div> <div data-bbox="837 789 1065 1016">  <p>Adjustable dividers</p> </div> <div data-bbox="1122 789 1349 1016">  <p>Internal cable pocket</p> </div> <div data-bbox="561 1081 789 1308">  <p>2 padlocks with keys</p> </div> <div data-bbox="837 1081 1065 1308">  <p>Locking block and pin to secure to a surface</p> </div> <div data-bbox="1122 1081 1349 1308">  <p>Cable management</p> </div> </div> | | | |
| <div style="text-align: center;">  <p>Does your device fit?</p> <p>Please check the Tech Tub™ compatibility chart (see documents tab in product pages on www.copernicused.com) to ensure that devices will fit your choice of Tech Tub™.</p> </div> | <p>Warranty TEC57: Tech Tub™ - lifetime TEC600, TEC700, TEC1000 and TEC600C: Tech Tub™ - lifetime power supply 1 year</p> | | | |

Choosing your Tech Tub™ Cart and Trolley



Tech Tub™ Trolley with 1 Tech Tub™

This unique trolley holds one Tech Tub™ and is an ideal solution for transporting small quantities of devices from one location to another.

| Devices and Tech Tub™ | Trolleys |
|----------------------------------|---|
| Holds 6 tablets (TEC600) | Trolley with 1 Premium Tech Tub™ (TEC606) |
| Holds 7 tablets (TEC700) | Trolley with 1 Premium Tech Tub™ (TEC707) |
| Holds 6 Chromebooks™ (TEC600C) | Trolley with 1 Premium Tech Tub™ (TEC606C) Available Summer 2015 |
| Holds up to 10 tablets (TEC1000) | Trolley with 1 Premium Tech Tub™ (TEC1010) Available Summer 2015 |
| Holds 1 Base Tech Tub™ (TEC57) | Trolley with 1 Base Tech Tub™ (TEC606B) |

Size 35 5/8" H x 27 3/4" W x 21 1/2" D

Warranty

- Frame - 5 years
- Tech Tub™ - lifetime
- Power supply - 1 year



Tech Tub™ Cart with 2 Tech Tubs™

This cart has the capacity to hold 2 Tech Tubs™ along with a locking system for added security.

| Devices and Tech Tubs™ | Carts |
|---|---|
| Holds 12 tablets (2 Tubs-TEC600) | Cart with 2 Premium Tech Tubs™ (TEC612) |
| Holds 14 tablets (2 Tubs-TEC700) | Cart with 2 Premium Tech Tubs™ (TEC714) |
| Holds 12 Chromebooks™ (2 Tubs-TEC600C) | Cart with 2 Premium Tech Tubs™ (TEC612C) Available Summer 2015 |
| Holds up to 20 tablets (2 Tubs-TEC1000) | Cart with 2 Premium Tech Tubs™ (TEC1020) Available Summer 2015 |

Above models include:

- 2 Premium Tech Tubs™
- Each tub individually locks to the cart
- Large handle makes moving the cart from either the back or the side easy and supports the lids when open
- 3" locking casters, 2 locking

| | |
|---|--|
| Holds 2 Base Tech Tubs™ (2 Tubs-TEC57) | Cart with 2 Base Tech Tubs™ (TEC612B) |
| <ul style="list-style-type: none"> • Includes all the features listed above except the Premium Tech Tubs™ are replaced with Base Tech Tubs™ (includes power strip tray). | |

Size TEC510 - Outer dimension
36 1/2"H x 28 1/8"W x 20 3/4" D
TEC510B - Outer dimension (with power strip tray)
36 1/2" H x 8 1/8" W x 21 3/8" D

Warranty

- Frame - 10 years
- Tech Tub™ - lifetime
- Power supply - 1 year



Tech Tub™ Cart with 4 Premium Tech Tubs™

This unique cart holds 4 Premium Tech Tubs™ and has a locking system to provide security.

| Devices and Tech Tubs™ | Carts |
|--|---|
| Holds 24 tablets (4 Tubs-TEC600) | Cart with 4 Premium Tech Tubs™ (TEC624) |
| Holds 28 tablets (4 Tubs-TEC700) | Cart with 4 Premium Tech Tubs™ (TEC728) |
| Holds 24 Chromebooks™ (4 Tubs-TEC600C) | Cart with 4 Premium Tech Tubs™ (TEC624C) Available Summer 2015 |
| Holds up to 40 tablets (4 Tubs-TEC1000) | Cart with 4 Premium Tech Tubs™ (TEC1040) Available Summer 2015 |

Above models include:

- High Security
- Lock all four tubs to the cart with one lock
- Top shelf for laptops or other instructional uses
- Locking storage for a laptop, Apple TV, and USB Hub
- External cable management
- 4" casters, 2 locking

Size 42" H x 32 5/8" W x 19 3/4" D

Warranty

- Frame - 10 years
- Tech Tub™ - lifetime
- Power supply - 1 year

Please visit www.copernicused.com for videos, whitepapers, pricing, assembly instructions and more.

Dewey the Document Camera Stand

technology



Watch video



Instantly turn your iPad® 2, 3, 4, Air, Air 2, iPad® Mini, Mini 2 and iPad® Mini 3 into a document camera with Dewey the Document Camera Stand. Utilizing the iPad's® camera, this high quality stand provides teachers and students with the opportunity to share work, ideas and anything else that inspires. Dewey delivers the basic functionality of traditional document cameras, but at a fraction of the cost.

IMPROVED



Secure device clamps



DCS2A - Dewey with LED lighting

| SKU | Product name and details | Warranty and dimensions |
|-------|--|---|
| DCS1A | <p>Dewey the Document Camera Stand</p> <ul style="list-style-type: none"> • Fits iPad® 2, 3, 4, Air, Air 2, iPad® Mini, Mini 2 and iPad® Mini 3 with or without a case • 90° rotating mount that swivels and tilts, keeping the iPad® secure • Lightweight and height adjustable • Useful as an iPad® stand on desks or other flat surfaces | <ul style="list-style-type: none"> • Frame – 1 year • 12 3/4" - 23"H (in lowest to highest position) x 10 3/4"W x 15 3/4"D <p>Patent pending on Dewey</p> |
| DCS2A | <p>Dewey the Document Camera Stand with LED Lighting (batteries not included)</p> | |

7 Device Tech Cart



Headphone holder mounts on the side or top of the cart



Cord management for iPads® and Chromebooks™



Ergonomic handle for mobility



Seven outlet power strip



SKU

Product name and details

Warranty and dimensions

IPT102

7 Device Tech Cart

- Able to store and charge up to 7 different devices with or without a case, including iPads®, iPad® Mini, 11" Chromebooks™ and other devices
- 7 outlet power strip
- Cable management for each Tub
- Top or side mounted headphone rack holds up to 7 headphones
- Tiny Tub provides storage for styluses or other accessories
- 3" casters, two locking

- Frame - 10 year
- Tubs - lifetime
- 33"H x 17"W x 21"D

Media Pods



Watch video



① Rolling Media Pod



② Tabletop Media Pod



③ Rolling Media Pod with Dewey Mount



④ Tabletop Media Pod with Dewey Mount



technology

| SKU | Product name and details | Warranty and dimensions |
|------------|---|--|
| ① AUD6 | Rolling Media Pod <ul style="list-style-type: none"> • Holds 6 iPads® or other tablets with or without cases • Includes 2 Open Tubs and 2" locking casters • Power strip mount to keep power close at hand (power strip not included) • Holds 6 standard size headphones | <ul style="list-style-type: none"> • Frame - 5 years • Tubs - lifetime • 25"H x 30"W x 23"D |
| ② AUD5 | Tabletop Media Pod <ul style="list-style-type: none"> • Same as the AUD6, but without the rolling frame on casters | <ul style="list-style-type: none"> • Frame - 5 years • Tubs - lifetime • 11"H x 30"W x 23"D |
| ③ AUD6-DCS | Rolling Media Pod with Dewey Mount <ul style="list-style-type: none"> • Same as AUD6, but includes Dewey Mount iPad® Clamp (holds an additional 10" iPad®) | <ul style="list-style-type: none"> • Frame - 5 years • Tubs - lifetime • Dewey mount - 1 year • 27"H x 30"W x 23"D |
| ④ AUD5-DCS | Tabletop Media Pod with Dewey Mount <ul style="list-style-type: none"> • Same as the AUD6, but without the rolling frame on casters and includes Dewey Mount iPad® Clamp (holds an additional 10" iPad®) | <ul style="list-style-type: none"> • Frame - 5 years • Tubs - lifetime • Dewey mount - 1 year • 14"H x 30"W x 23"D |



3D Printer Cart

Take a look at the 3D Printer Cart Whitepaper by Gary S. Stager.
Visit www.copernicused.com/whitepapers

NEW



Watch video



Premium model (TD5001)

Base model (TD5000)



Sliding laptop tray



4" casters, 2 locking



Height adjustable spool holder



Magnetic tool holders

technology

| SKU | Product name and details | Warranty and dimensions |
|--------|--|--|
| TD5000 | <p>Base 3D Printer Cart</p> <ul style="list-style-type: none"> Accommodates 3D printers with a footprint of up to 19 1/2" W x 26 1/2" D 4 Open Tubs and 1 Really Big Tub 4" casters, 2 locking 6 outlet power strip Adjustable spool holder (holds maximum of 4 spools) Sliding laptop shelf fits laptops up to 17" Magnets for attaching accessories to frame | <ul style="list-style-type: none"> Frame - 5 year Tubs - lifetime Tech Tub™ and lid - lifetime and power supply - 1 year 59" H x 36" W x 24" D |
| TD5001 | <p>Premium 3D Printer Cart - all base model features and includes:</p> <ul style="list-style-type: none"> Base Tech Tub™ (SKU TEC57) with padlock, 2 Open Tubs and 1 Really Big Tub | |

STEM MAKER STATION



STEM Maker Station



Watch video

NEW



Tape, ribbon and string dispenser



Coroplast overhead sign and display (letters not included)



Pegboard for tool storage (Premium Maker Station only)



4" casters with brakes and pinch point covers



Combination of Tubs



6 outlet power strip and mount (optional)

◀ Premium model (STEM100)

Base model shown above (STEM102)

| SKU | Product name and details | Warranty and dimensions |
|----------|---|--|
| STEM102 | Base STEM Maker Station <ul style="list-style-type: none"> • Cardboard or material storage rack • Tape/ribbon/string dispenser rack • Coroplast overhead sign and display • Hooks for hanging accessories/tools • Large bottom shelf • 4 Small Tubs, 4 Open Tubs, 4 Tiny Tubs • 4" casters with brakes and pinch point covers | <ul style="list-style-type: none"> • Frame - 10 year • Tubs - lifetime • Tech Tub™ and lid - lifetime • and power supply - 1 year • 56" H x 47" W x 27" D |
| STEM100 | Premium STEM Maker Station - all Base model features and also includes: <ul style="list-style-type: none"> • Whiteboard for collaborative brainstorming and project planning • Pegboard for tool storage • Base Tech Tub™ (SKU TEC57) for locking up specialized equipment and tools • 4 Small Tubs, 3 Open Tubs, 4 Tiny Tubs | |
| STEM-AC1 | 6 outlet power strip and mount | |



easels



Easels

| | |
|--|----|
| Royal® Reading Writing Center | 27 |
| Queen Royal® Reading Writing Center | 27 |
| Classic Royal® Reading Writing Center | 28 |
| Regal™ Reading Writing Center | 29 |
| Expanded Royal® Reading Writing Center | 30 |
| Standard Royal® Reading Writing Center | 31 |
| Premium Royal® Inspiration Station | 32 |
| Standard Royal® Inspiration Station | 33 |
| Inspiration Station with Tech Tubs™ | 33 |
| Deluxe Chart Stand | 34 |
| Primary Teaching Easel | 35 |
| Early Learning Station | 36 |
| Double Sided Bamboo Easel | 37 |
| Premium Teach 'n' Go Cart | 38 |
| Classroom Cruiser | 39 |
| Premium Royal® Chart Caddy Center | 39 |
| Tabletop Easel | 40 |
| Teacher's Value Easel | 41 |
| Basic Chart Stand | 41 |



Ok, it's only I, the warden Billy Goat Gruff...
and the Billy Goat is his very small cousin...
"And I'm going to the warden to make myself fit."
"So you're not," said the Troll.
"No, I'm coming to visit you!"
"Oh, please don't take me. I'm not sick, that I am!"
said the Billy Goat. "So let all the warden!
Billy Goat Gruff says: "He's much bigger."
"Well, that is all right," said the Troll.

Royal® Reading Writing Center



Royal® Reading Writing Center (RC105)



Open Tubs with safety stops



Ultra-Safe premium book ledge



Tiny Tubs



Rear lined board



Foot-activated brakes



Big Book racks

| SKU | Product name and details | Warranty and dimensions |
|-------|---|---|
| RC105 | <p>Royal® Reading Writing Center</p> <ul style="list-style-type: none"> • Front magnetic dry erase surface • Rear removable double-sided dry erase board with lines on one side • Ultra-Safe premium book ledge that locks into multiple positions • Includes large middle shelf, Big Book racks, 2 Tiny Tubs, snap-on chart paper hooks, 2 Magnetic Page Paws and 4 sliding Open Tubs with safety stops • 3" casters and 2 foot-activated brakes | <ul style="list-style-type: none"> • Frame – lifetime • Tubs – lifetime • 56"H x 31"W x 32"D |
| RC138 | <p>Queen Royal® Reading Writing Center</p> <ul style="list-style-type: none"> • Same as above, but with a wider whiteboard (39") | <ul style="list-style-type: none"> • Frame – lifetime • Tubs – lifetime • 56"H x 39"W x 30"D |

Classic Royal® Reading Writing Center

easels



Rear removable double sided board



Ultra-safe premium book ledge



Big Book racks

| SKU | Product name and details | Warranty and dimensions |
|-------|---|---|
| RC005 | <p>Classic Royal® Reading Writing Center</p> <ul style="list-style-type: none"> • Front magnetic dry erase surface and a rear removable double-sided dry erase board (lined on one side) • 4 sliding Open Tubs • Ultra-Safe premium book ledge that locks into multiple positions • Includes large middle shelf, Big Book Racks, snap-on chart paper hooks, and 2 Magnetic Page Paws • Four 2" twin wheel locking casters | <ul style="list-style-type: none"> • Frame – lifetime • Tubs – lifetime • 57"H x 33"W x 27"D |

Regal™ Reading Writing Center



Rear removable dry erase board



Foot-activated brakes

easels

| SKU | Product name and details | Warranty and dimensions |
|-----|--------------------------|-------------------------|
|-----|--------------------------|-------------------------|

RC107

Regal™ Reading Writing Center

- Front magnetic dry erase surface and a rear removable dry erase board that hangs landscape
- 4 sliding Open Tubs with safety stops
- Ultra-Safe book ledge that locks into multiple positions
- Snap-on chart paper hooks
- 3" casters and 2 foot-activated brakes

Warranty and dimensions

- Frame – 10 year
- Tubs – lifetime
- 56"H x 31"W x 32"D

Expanded Storage Royal® Reading Writing Center



easels



Top metal shelf with built-in marker storage

SKU Product name and details

XS005 Expanded Storage Royal® Reading Writing Center

- Magnetic dry erase board
- 4 sliding tubs
- Ultra-Safe premium book ledge locks into multiple positions
- Full size metal shelf with built-in marker storage
- Includes 2 Magnetic Page Paws, snap-on chart paper hooks, 3 internal wire shelves, top shelf, and telescoping hooks for holding pocket charts
- Four 2" locking casters

Warranty and dimensions

- Frame – lifetime
- Tubs – lifetime
- 57"H x 31"W x 27"D

Standard Reading Writing Center



easels

SKU Product name and details

RC106

Standard Reading Writing Center

- Front magnetic dry erase surface
- Rear removable dry erase board
- Ultra-Safe premium big ledge that locks into multiple positions
- 2 hooks for hanging pocket charts or accessories
- 3" casters, and 2 foot-activated brakes

Warranty and dimensions

- Frame – 10 years
- 56"H x 31"W x 32"D

Premium Royal® Inspiration Station



Open Tubs with safety-stops

SKU

Product name and details

IS3

Premium Royal® Inspiration Station

- Front magnetic dry erase surface with slide-out board to enlarge work area by 15"W
- Rear removable double-sided dry erase board with lines on one side
- Ultra-Safe premium book ledge that locks into multiple positions
- 10 Open Tubs with safety-stops, 1 Really Big Tub, 8 Tiny Tubs, a Big Book Rack and 2 Magnetic Page Paws
- Top shelf for teacher storage, chart paper hooks and telescoping hooks to accommodate wide pocket charts
- 3" casters and 2 foot activated brakes

Warranty and dimensions

- Frame – lifetime
- Tubs – lifetime
- 61"- 64"H x 30"W x 30"D

Standard Royal® Inspiration Station



① Standard Royal® Inspiration Station (IS2)



② Inspiration Station with Premium Tech Tub™ (IS2-TEC-PR)

easels

| SKU | Product name and details | Warranty and dimensions |
|--------------|---|--|
| ① IS2 | <p>Standard Royal® Inspiration Station</p> <ul style="list-style-type: none"> • Front magnetic dry erase surface with slide-out board to enlarge work area by 15"W • Ultra-Safe premium book ledge that locks into multiple positions • 4 Open Tubs with safety-stops, 1 Really Big Tub, 2 Tiny Tubs, a Big Book Rack and 2 Magnetic Page Paws • Top shelf for teacher storage, chart paper hooks and telescoping hooks to accommodate wide pocket charts • 3" casters with 2 foot-activated brakes | <ul style="list-style-type: none"> • Frame – lifetime • Tubs – lifetime |
| ② IS2-TEC-PR | Inspiration Station with Premium Tech Tub™ (TEC600) | <ul style="list-style-type: none"> • Frame – lifetime • Tubs – lifetime • Tech Tub™ and Lid – lifetime • Power supply – 1 year |
| IS2-TEC-B | Inspiration Station with Base Tech Tub™ (TEC57) | |



Shown in lowest position

Deluxe Chart Stand



Dry erase board shown in lowest position.



Extended telescoping hooks for pocket charts (pocket chart not included). Shown in highest position.

| SKU | Product name and details | Warranty and dimensions |
|-------|--|--|
| CS700 | <p>Deluxe Chart Stand</p> <ul style="list-style-type: none"> • Magnetic double-sided dry erase white board with telescoping hooks to accommodate pocket charts up to 49" wide • Board height is adjustable upon assembly to best suit your needs • Safety Cap™ big book ledge that locks into multiple positions • Includes 2 Open Tubs, and snap-on chart hooks • 2" twin wheel locking casters | <ul style="list-style-type: none"> • Frame – 10 years • Tubs – lifetime • 50" - 65" H x 28" W x 27" D |

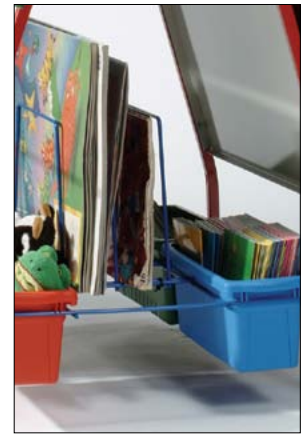


Primary Teaching Easel

 Watch video



Rear removable felt board



Big Book racks



Ultra-Safe premium book ledge that locks into multiple positions

easels

| SKU | Product name and details | Warranty and dimensions |
|-----|--------------------------|-------------------------|
|-----|--------------------------|-------------------------|

PTE78

Primary Teaching Easel

- Front magnetic dry erase board, with a rear removable felt board
- 4 Small Open Tubs for lesson storage
- Ultra-Safe premium book ledge that locks into multiple positions
- Snap-on chart paper and felt board hooks, Big Book and Tub Racks
- 2" locking casters

- Frame – 10 years
- Tubs – lifetime
- 56"H x 30"W x 30"D

Early Learning Station



Easily folds and stores away during school breaks or to make room for other activities

SKU

Product name and details

Warranty and dimensions

ELS1

Early Learning Station

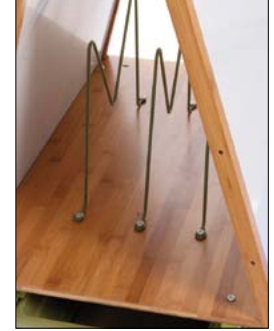
- 2 magnetic dry-erase whiteboards, one side with solid/dotted/solid line sequence
- Roll-up felt for creative play, along with corner ties and magnets to secure on station
- Includes 2 open tubs and 4 snap-on chart paper and accessory hooks
- Safety Cap™ big book ledge that locks into multiple positions
- Frame folds for easy storage
- 2" locking casters

- Frame – 10 years
- Tubs – lifetime
- 48"H x 26"W x 29"D

Double Sided Bamboo Teaching Easel



4 sliding Open Tubs with safety-stops



Big Book rack

easels

Why Bamboo?

Bamboo brings the feeling of natural elements into the classroom. It is a renewable and sustainable resource. Bamboo grows quickly, up to several feet in one year and is very durable.

| SKU | Product name and details | Warranty and dimensions |
|-----|---|--|
| BE1 | <p>Double Sided Bamboo Teaching Easel</p> <ul style="list-style-type: none"> • 2 magnetic dry-erase boards • 4 sliding Open Tubs with safety-stops • Ultra-Safe premium book ledge that locks into multiple positions • Includes bamboo middle shelf, Big Book racks, chart paper hooks and 2 magnetic Page Paws • 3" locking casters | <ul style="list-style-type: none"> • Frame – 3 years • Tubs – lifetime • 57"H x 31"W x 27"D |

Premium Teach 'n' Go Cart



| SKU | Product name and details | Warranty and dimensions |
|------|---|--|
| TAG2 | <p>Premium Teach 'n' Go Cart</p> <ul style="list-style-type: none"> • Magnetic dry-erase board with two chart paper hooks • Top shelf storage along with extra large poster file space • Safety Cap™ premium book ledge that locks into multiple positions • Includes 6 sliding Open Tubs, 2 Small Tubs and 2 Stubby Tubbys with built-in safety stops • 5" casters | <ul style="list-style-type: none"> • Frame – 5 years • Tubs – lifetime • 68"H x 40"W x 30"D |

Classroom Cruiser™



Premium Royal® Chart Caddy Center



10 Chart Caddys®

Premium Royal® Chart Caddy Center (BTHC2)

easels

| SKU | Product name and details | Warranty and dimensions |
|-------|--|---|
| CC3 | <p>Classroom Cruiser™</p> <ul style="list-style-type: none"> • Detachable Tabletop Easel (TTE100) for use at desk or floor • Includes 1 Large Open Tub, 1 Large Divided Tub, 2 Small Open Tubs, a Big Book rack, 2 detachable storage pocket centers - each with 5 pockets and internal storage shelf • 2" locking casters | <ul style="list-style-type: none"> • Frame – 10 years • Tubs – lifetime • TTE100 - 5 years • 30"H x 21"W x 18"D |
| BTHC2 | <p>Premium Royal® Chart Caddy Center</p> <ul style="list-style-type: none"> • Magnetic dry erase board • 4 sliding Open Tubs with safety-stops and a Big Book rack • Ultra-Safe premium book ledge locks into multiple positions • 10 Chart Caddys® with 100 adhesive hang tags • 2" locking casters | <ul style="list-style-type: none"> • Frame – lifetime • Tubs – lifetime • 58"H x 35"W x 30"D |
| BTHC3 | <p>Premium Royal® ECO Chart Caddy Center</p> <ul style="list-style-type: none"> • As above but Tubs are replaced with 4 sliding ECO Open Tubs <p>Tub colors include: ● ECO Blue ● ECO Red ● ECO Green ● ECO Sand</p> | <ul style="list-style-type: none"> • Frame – lifetime • Tubs – lifetime • 58"H x 35"W x 30"D |

Tabletop Easels



easels



| SKU | Product name and details | Warranty and dimensions |
|--------|---|---|
| TTE100 | <p>Tabletop Easel (Blue)</p> <ul style="list-style-type: none"> • 2 magnetic dry-erase boards with one side featuring 1" spaced blue lines • Book/marker ledge on either side of the easel • 3 removable tiny tubs for manipulatives, markers, and other tools • Folding design allows easy set-up and sharing from room to room | <ul style="list-style-type: none"> • Frame – 5 years • Tubs – lifetime • 19" H x 19" W x 17" D |
| TTE101 | <p>Tabletop Easel (Sand)</p> <ul style="list-style-type: none"> • As above, but frame color is sand | |

Teacher's Value Easel



Basic Chart Stand



Please note: tubs are not included

| SKU | Product name and details | Warranty and dimensions |
|-------|--|---|
| VE550 | <p>Teacher's Value Easel</p> <ul style="list-style-type: none"> • Magnetic dry-erase board accompanied by an integrated book ledge • Includes 2 adjustable chart hooks, 4 plastic tubs and lower shelf • 2" casters, 2 locking | <ul style="list-style-type: none"> • Frame – 1 year • 58" H x 30" W x 27" D |
| BCS1 | <p>Basic Chart Stand</p> <ul style="list-style-type: none"> • Dry-erase whiteboard • Snap-on chart paper hooks • Adjustable bottom bar to accommodate various tub sizes (tubs are not included) • 2" casters, two locking | <ul style="list-style-type: none"> • Frame – 1 year • 60" H x 25" W x 24" D |

Storage

| | |
|---|----|
| Library on Wheels™ | 43 |
| Leveled Reading Book Browser Cards | 44 |
| Book Browser Card with Tech Tubs™ | 45 |
| Teacher Trolley | 46 |
| Storage Room Organizer for Leveled Literacy Program | 47 |
| Tubs | 48 |
| Phys Ed Cart | 49 |
| Chart Caddy™ 10 Pack | 50 |
| Multi-Purpose Cart | 50 |
| Teacher's Value Book Browser Cart | 51 |
| Reading Resource Station | 51 |

storage

Tubs have a lifetime warranty and can stand up to any use!

Library on Wheels™



① Library On Wheels™ (LW430)



Divided Tub for LW430



② Library On Wheels™ with 18 small tubs (LW430-18)

storage

| SKU | Product name and details | Warranty and dimensions |
|------------|--|--|
| ① LW430 | <p>Library on Wheels™</p> <ul style="list-style-type: none"> Includes 9 Divided Tubs and adhesive label holders 5" casters, 2 locking with brakes | <ul style="list-style-type: none"> Frame – 10 years Tubs – lifetime 40" H x 43" W x 18" D |
| ② LW430-18 | <p>Library on Wheels™ with 18 small tubs</p> <ul style="list-style-type: none"> As above, but with 18 small tubs | |

Leveled Reading Book Browser Carts



① Leveled Reading Book Browser (BB005-9)



② Leveled Reading Book Browser (BB005-18)



Divided Tub for BB005-9 and BB005-9-1

storage

| SKU | Product name and details | Warranty and dimensions |
|--------------|--|---|
| ① BB005-9 | Leveled Reading Book Browser 9 • 6 Divided Tubs, 3 Open Tubs and 2" locking casters | • Frame – 10 years • Tubs – lifetime • 36"H x 41"W x 16"D |
| ② BB005-18 | Leveled Reading Book Browser 18 • 18 Small Book Tubs and 2" locking casters | |
| ③ BB005-9-1 | Deluxe Leveled Reading Book Browser 9 • 6 Divided Tubs, 3 Open Tubs and 2" locking casters • 2 small (sides) and 1 large book display rack (back) | • Frame – 10 years • Tubs – lifetime • 36"H x 49"W x 21"D |
| ④ BB005-18-1 | Deluxe Leveled Reading Book Browser 18 • 18 Small Book Tubs and 2" locking casters • 2 small (sides) and 1 large book display (back) | |



③ Deluxe Leveled Reading Book Browser (BB005-9-1)



④ Deluxe Leveled Reading Book Browser (BB005-18-1)

Book Browser Carts with Tech Tubs™



| SKU | Product name and details | Warranty |
|---------------------|--|---|
| BB5-TEC-PR1 (shown) | Book Browser Cart with 1 Premium Tech Tub™ • 7 Open Tubs and 2" locking casters | <ul style="list-style-type: none"> • Frame – 10 years • Open Tubs - lifetime • Tech Tub™ and Lid – lifetime • Power source - 1 year |
| BB5-TEC-PR3 | Book Browser Cart with 3 Premium Tech Tubs™ • 3 Open Tubs and 2" locking casters | |
| BB5-TEC-B1 | Book Browser Cart with 1 Base Tech Tub™ • 7 Open Tubs and 2" locking casters | |
| BB5-TEC-B3 | Book Browser Cart with 3 Base Tech Tubs™ • 3 Open Tubs and 2" locking casters | |

Teacher Trolley

storage



Teacher Trolley with board removed

Product name and details

LLS100

Teacher Trolley

- Removable magnetic dry-erase board for independent and group learning
- Chart hooks for lessons on chart paper
- Includes 3 Small Open Tubs, 2 file folder bins and a storage pocket center
- Two 3" locking casters and two 3" dolly-type casters for mobility

Warranty and dimensions

- Frame – 5 years
- Tubs – lifetime
- 46"H x 20"W x 16"D

Storage Room Organizer for Leveled Literacy Program



Tub color options:



Blue



Green



Mixed
(shown above)



Red



storage

SKU

Product name and details

Warranty and dimensions

LLS300-B (Blue)
LLS300-G (Green)
LLS300-M (Mixed)
LLS300-R (Red)

Storage Room Organizer for Leveled Literacy Program (Open Tubs)

- Magnetic dry-erase board perfect for writing notes on side of organizer
- Includes 12 Open Tubs, a storage pocket center
- Build to its full height (56"H) or as two separate standing units (31"H) each

- Frame – 5 years
 - Tubs – lifetime
- Two separate units:
- 31"H x 41"W x 15"D
- Assembled as one full unit
- 56"H x 41"W x 15"D

Tubs

- Blue
- Green
- Red
- Clear
- Yellow
- Eco-Blue
- Eco-Green
- Eco-Red
- Eco-Sand



- ① **Open Tub** SKU: CC4068 + color = CC4068-ECO-S
General purpose storage

- Blue
- Green
- Red
- Clear
- Yellow



- ② **Divided Tub** SKU: CC4069 + color = CC4069-Y
Built in dividers to keep your books upright

- Blue
- Green
- Red
- Clear
- Yellow



- ③ **Small Open Tub** SKU: CC4070 + color = CC4070-G
Perfect for small quantities of books



- Blue
- Sand

- ④ **Really Big Tub** SKU: CC4073 + color = CC4073-B
Suitable for your oversized books and manipulatives (non-recycled)

- Blue
- Charcoal Grey
- Red



- ⑤ **Stubby Tubby** SKU: CC4074 + color = CC4074-R
Great for storing papers and small items



- ⑥ **Tiny Tub Caddy** SKU: TTC1
Handy for keeping your pens and small art supplies organized (non-recycled)

Sizes

Open Tubs: 12" L x 15" W x 6" D

Divided Tubs: 12" L x 15" W x 6" D

Small Open Tubs: 15" L x 6" W x 6" D

Really Big Tubs: 25" L x 13" W x 6" D

Stubby Tubby: 15" L x 12" W x 3" D

Tiny Tub Caddy Frame: 9" L x 13" W x 6" D

Phys Ed Cart



storage

SKU

BC300

Product name and details

Phys Ed Cart

- Large metal basket – fits up to 20 basketballs
- Includes 3 removable Open Tubs and hoop holder
- 5" casters, two locking

Warranty and dimensions

- Frame – 10 years
- Tubs – lifetime
- 44" H x 41" W x 23" D

Chart Caddy™ 10 Pack



① Chart Caddy® 10 Pack (CD400)

Multi-Purpose Carts



② Multi-purpose Cart with Blue and Yellow Tubs (CC005-9-WBY)

| SKU | Product name and details | Warranty and dimensions |
|---------------|--|---|
| ① CD400 | Chart Caddy™ 10 Pack <ul style="list-style-type: none"> • Snap-on hook design to keep hanging items from falling off when bumped or transported • 3 built-in snap-pegs and 2 built-in hooks • Includes 10 Chart Caddy's™ and 100 adhesive hang tags for charts without holes | <ul style="list-style-type: none"> • Lifetime • 5"H x 18 1/2"W x 3/8"D |
| CC005-9-C | Multi-purpose Cart with Clear Tubs <ul style="list-style-type: none"> • Includes 9 Open Tubs and 2" locking casters | <ul style="list-style-type: none"> • Frame – 10 years • Tubs – lifetime • 36"H x 40"W x 16"D |
| ② CC005-9-WBY | Multi-purpose Cart with Blue and Yellow Tubs <ul style="list-style-type: none"> • Includes 9 Open Tubs and 2" locking casters | |

Teacher's Value Book Cart



① Teacher's Value Book Cart (VBC5600)

Reading Resource Station



② Reading Resource Station (RRS4)

storage

| SKU | Product name and details | Warranty and dimensions |
|-----------|---|---|
| ① VBC5600 | Teacher's Value Book Cart • 4 book display racks, 6 plastic storage tubs and 2" locking casters | • Frame – 5 years • Tubs – lifetime • 50"H x 28"W x 32"D |
| ② RRS4 | Reading Resource Station • 7 tier display racks for books and magazines • Includes 4 Small Open Tubs, and dry-erase sign for themes and quote of the day • 2" locking casters | • Frame – 5 years • Tubs – lifetime • 44" H x 41" W x 23" D |

Early Childhood | Arts & Crafts

Double Sided Art Easel 55

Spring Loaded Paint Drying Rack 56

Drying Racks 57

Sand and Water Sensory Centers 58





“

The Double Sided Art Easel is great because everything is at the student's level so they can be completely independent from start to finish. It is great for fine motor skills with the clips and containers.

- Paula Kells, Kindergarten Teacher, Ontario & Paula Castellan, ECE, Ontario

”



Rural school in China. A student with her masterpiece!

Double Sided Art Easel



SKU

Product name and details

Warranty and dimensions

PDR11

Double Sided Art Easel

- 2 dry-erase painting surfaces (choose from 2 positions upon assembly)
- 10 built-in drying racks
- Includes 1 sliding Really Big Tub, apron hooks, large art paper clips, 2 removable paint trays with 7 paint pots and spill-proof caps
- 2" locking casters

- Frame – 5 years
- Tub – lifetime
- 51" H x 27" W x 29" D

Spring Loaded Paint Drying Rack



Lock down bar for safety holds racks in place



Removable paint drip tray (cardboard)



Paper catch clips



Personalized rack spacers

SKU

Product name and details

Warranty and dimensions

PDR20KD

Spring Loaded Paint Drying Rack

- Contains 20 spring loaded racks that make it easy for art to be inserted or removed with ease
- Lock down bar for safety holds racks in place
- Rack spacers can be personalized with student names
- Paper catch clips
- Paint drip tray to protect classroom floors from spills (removable)
- 2" locking casters

- 1 year frame and components
- 58 1/2"H x 35 1/2"W x 24 1/2"D

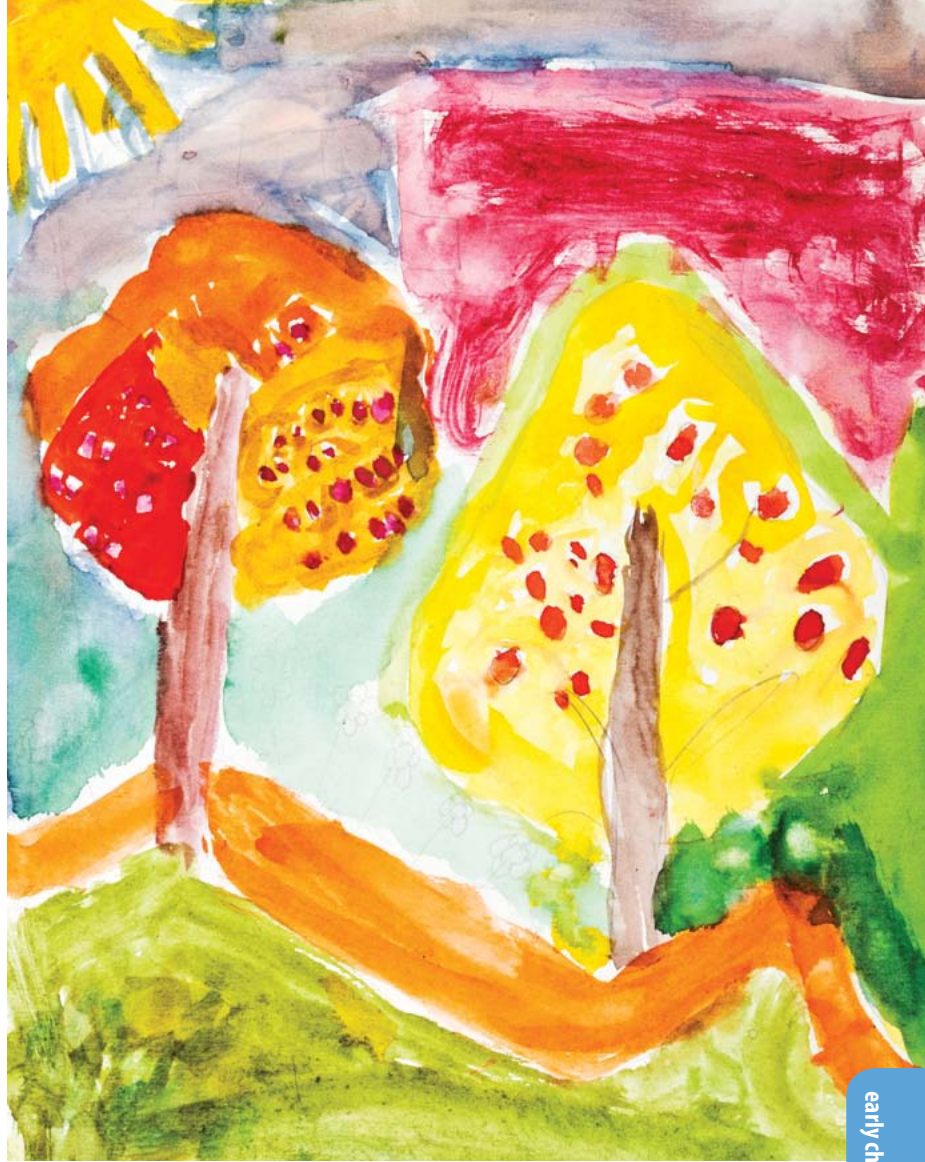
Drying Racks



①



②



| SKU | Product name and details | Warranty and dimensions |
|---------|---|--|
| ① PDR21 | Wall Mount Drying Rack (wall mounting hardware not included) <ul style="list-style-type: none"> • Contains 2 hooks to hang shelves upright • 20 shelves for drying artwork | <ul style="list-style-type: none"> • Frame – 1 year • 33”H x 20”W x 16”D |
| ② PDR40 | Double Sided Drying Rack <ul style="list-style-type: none"> • Ideal for counter or tabletop to store and dry artwork • Contains 40 shelves; 20 on each side | <ul style="list-style-type: none"> • Frame – 1 year • 26”H x 20”W x 32”D |

Sand and Water Sensory Center



Shown in highest position



Includes drain and hose



Lids can be used for sand etching

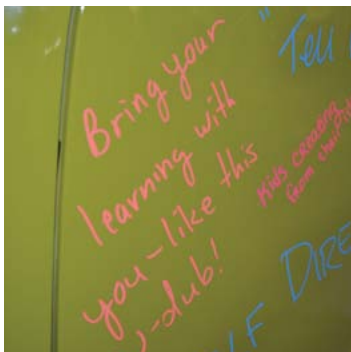
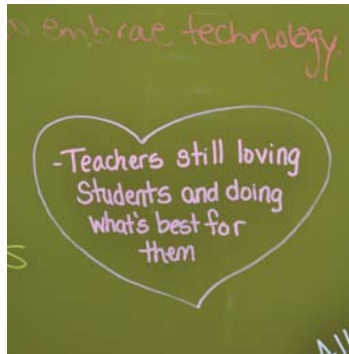
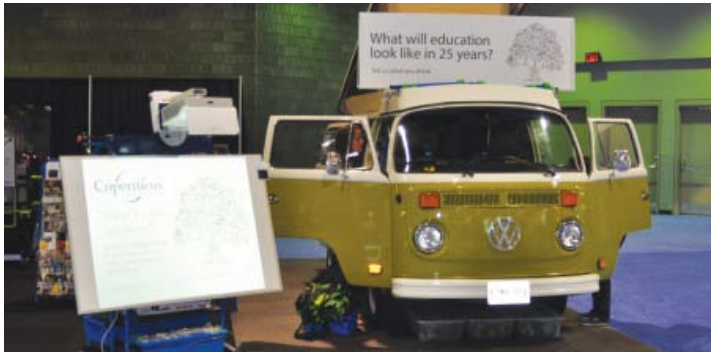
| SKU | Product name and details | Warranty and dimensions |
|-------|--|---|
| SWT2 | <p>Sand and Water Sensory Center</p> <ul style="list-style-type: none"> • One main large tub and two Really Big Tubs ideal for many little hands and sensory items • Includes two lids for sand etching and to keep contents clean and out of reach • ¼" turn drain with plug and hose to easily fill and empty • 18" tall with removable leg extensions (24" at full height) • 4" swivel locking casters with child safety covers | <ul style="list-style-type: none"> • Frame – 5 years • Tubs – lifetime • Main Tub – 5 years • 18 – 24"H x 30"D x 42"W |
| SWT2A | <p>Sand and Water Sensory Center with 2 really big tubs</p> <ul style="list-style-type: none"> • Premium Sand and Water Sensory Center with 2 Really Big Tubs that go inside the main tub to divide your table into multi-sensory units | |

“What will education look like in 25 years?”

Last year, we took our original 1977 Westfalia VW van (affectionately known as Westy) all the way to Atlanta for the International Society for Technology in Education Conference (ISTE®).



We posed one question to all the attendees: *what will education look like in 25 years?* The answers came in thick and fast. In fact, Westy had to be washed down at the end of every day to make room for the next day's responses. The answers were inspiring, thoughtful and sometimes witty. But always honest and personal. Thank you to everyone who took part. Look out for Westy this year at ISTE® and beyond!



Copernicus Idea Lab

Join the team and help to shape tomorrow's classroom solutions today.

What will you do?

You will participate in (on average 6-8 times per year):

- Focus groups
- Concept reviews
- Product refinements, i.e. color selections, features and options
- Developing catalog copy
- Providing curriculum information
- Answering questions about day to day teacher roles and needs

Depending on where you are located and the amount of time you have to share, the involvement can vary. Generally all help we ask for is done over the magical internet! Email, Skype, surveys...etc!

We may also ask you to support Copernicus classroom visits (when we are in your area).

There is no obligation and you will be compensated for your time.

Why is it important?

Development time is the time to make mistakes and try new things until we find out what works. Figuring out what the end product needs to be can take some tough work.

We want your constructive criticism. Designers are notoriously thick skinned, so tell us what you love or hate about what we present to you. We want to hear all you have to say. Don't worry, our feelings won't get hurt.



Visit copernicused.com/idea-lab/the-masterminds to fill out our short questionnaire and we will get right back to you!



Industrial Design Team



Masterminds at work! (Copernicus 2014)

“

A civilization
flourishes when people
plant trees
under whose shade
they will never sit.

- Greek Proverb

”



Canada

8194 County Road 109, R.R. #3, Arthur, ON N0G 1A0

USA

PMB #459, 60 Industrial Pkwy,
Cheektowaga, NY 14227

e: info@copernicused.com w: www.copernicused.com

t: 1 800 267 8494 or 519 848 3664